

CASE REPORT

Zinner Syndrome with Dilatation of Vas Deferens with Reflux on Doppler

Khaladkar SM*, Gupta A, Kuber RS and Reddy DJ

*Professor, Department of Radiodiagnosis, Dr.D.Y.Patil Medical College and Research Center, India**Post graduate resident, Department of Radiodiagnosis, Dr.D.Y.Patil Medical College and Research Center, India*

*Corresponding author: Khaladkar SM, Professor, Department of Radiodiagnosis, Dr.D.Y.Patil Medical College and Research Center, Dr.D.Y.Patil Vidyapeeth, Pune 411018, India, E-mail: drsanjaymkhaladkar@gmail.com

Citation: Khaladkar SM, Gupta A, Kuber RS, Reddy DJ (2018) Zinner Syndrome with Dilatation of Vas Deferens with Reflux on Doppler. J Radiol Diagn Methods 1: 104

Article history: Received: 15 May 2018, Accepted: 05 November 2018, Published: 09 November 2018

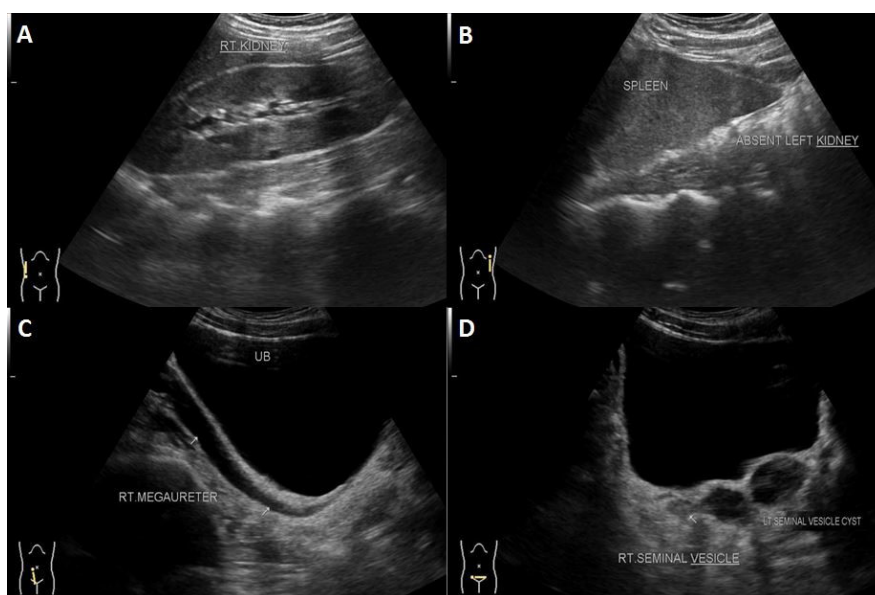
Abstract

Zinner syndrome is a triad of Mullerian duct abnormality characterized by ejaculatory duct obstruction, ipsilateral seminal vesicle cyst and unilateral renal agenesis. It is often detected incidentally during cross sectional imaging or during per rectal examination when most of the seminal vesicle cysts are less than 5 cms in size. It usually presents in the third or fourth decade of life due to infertility. We present a case of a 28 - year old male patient who presented with swelling in left hemiscrotum in the region of epididymal tail. Sonography of abdomen revealed left renal agenesis, multiple cysts in left seminal vesicle, dilated left vas deferens showing reflux on Valsalva maneuver and a well-defined slightly echogenic lesion in the left epididymal tail of size approximately 17 x 15 mm with central echoreflective calcification – likely due to epididymal cyst with inspissated secretions. Right megaureter was also seen.

Keywords: Seminal Vesicle; Renal Agenesis; Ejaculatory Duct; Vas Deferens; Zinner Syndrome

Case Report

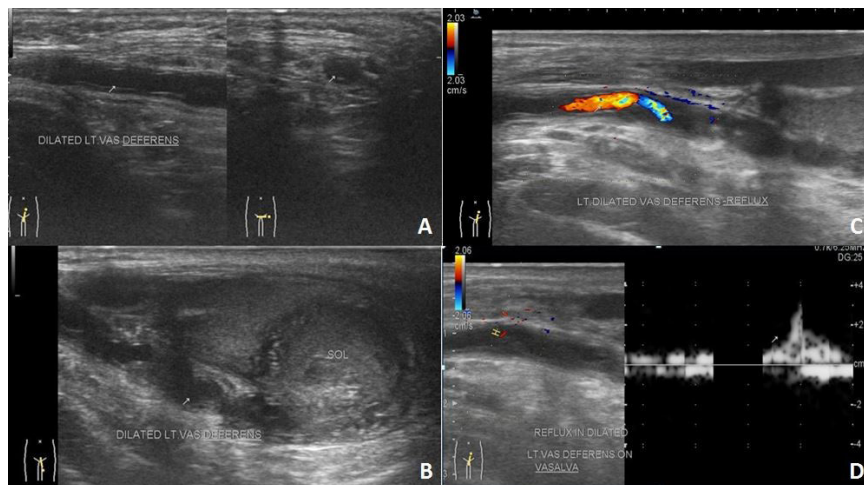
A 28 year old male patient presented with swelling in the left hemi-scrotum since 1 year, which increased since the last two months. There was no history fever, trauma and urinary bladder complaints. Sonography (USG) abdomen and pelvis showed absence of the left kidney in left renal fossa, along its course of ascent and in ectopic location – suggestive of agenesis. Right kidney showed mild compensatory hypertrophy (Figure 1A-B, 2 and 3).



(A) Right kidney in right renal fossa; (B) Absence of left kidney in left renal fossa; (C) right megaureter (marked by white arrows), (D) normal right seminal vesicle (marked by white arrow) and multiple cysts in left seminal vesicle

Figure 1: USG abdomen

Pelvic portion of right ureter showed mild dilatation with narrowing at right uretero-vesical junction – suggestive of congenital megaureter (Figure 1C). Left seminal vesicle was enlarged due to multiple anechoic cysts of variable sizes (Figure 1D). USG of the inguino-scrotal region showed a well-defined slightly echogenic lesion in the left epididymal tail of size approximately 17 x 15 mm with central echoreflective calcification (Figure 2B). Both the testicles appeared normal. Left vas deferens was dilated in its entire extent (Figure 2A-D). On colour Doppler and pulse Doppler studies, reflux was noted in dilated left vas deferens (Figure 2C-D). MRI of pelvis and inguino-scrotal region was done by obtaining T1 weighted images (T1WI) and T2 weighted images (T2WI) sequences in axial, coronal and sagittal planes. Left seminal vesicle was enlarged due to multiple cysts (Figure 4 and 5). Largest cyst measured approximately 38 x 25 mm. The cyst appeared hyperintense on T1WI and T2WI due to inspissated secretions or high protein content. Right seminal vesicle appeared normal, measuring approximately 22 x 14mm. Pelvic portion of right ureter showed dilatation with narrowing at right uretero-vesical junction – suggestive of congenital megaureter (Figure 5D). Both testicles appeared normal. A well-defined round lesion of size approximately 17 x 15 x 19 mm in Antero-posterior, transverse and cranio-caudal dimensions respectively was noted on left postero-lateral aspect of left testis in the region of epididymal tail. It appeared hyperintense on T1WI and T2WI with no fat suppression on T1 fat saturated images (T1FS) – suggestive of cyst with inspissated secretions or high protein content. The cyst showed a hypointense central focus on T2WI – suggestive of central calcification (Figure 6). Left spermatic cord was thickened. Prostate appeared normal. A diagnosis of Zinner's syndrome was made in view of seminal vesicle cysts, ipsilateral renal agenesis and ejaculatory duct obstruction.



(A) Dilated left vas deferens in longitudinal and transverse sections (marked by white arrow); (B) Well defined slightly echogenic mass (labelled as SOL- space occupying lesion) in epididymal tail due to inspissated secretions and dilated vas deferens; (C) Reflux in dilated vas deferens on colour Doppler on Valsalva; (D) Reflux in dilated vas deferens on pulse Doppler on Valsalva (marked by white arrow)

Figure 2: USG left inguino-scrotal region

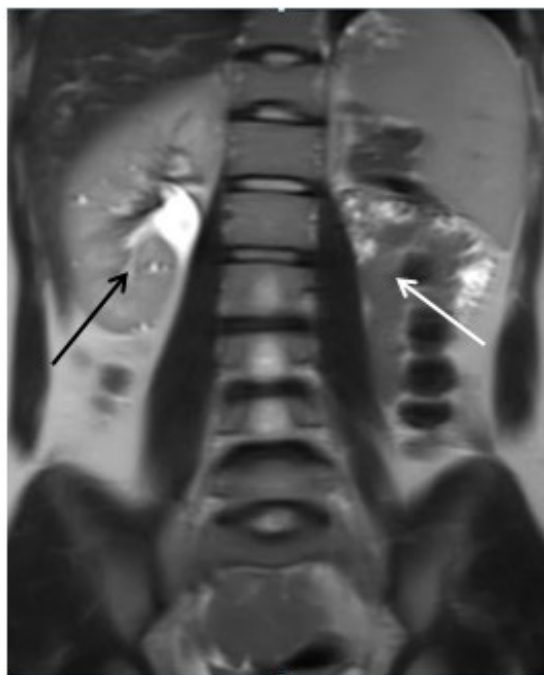


Figure 3: Coronal T2WI of abdomen showing left renal agenesis (marked by white arrow) and normal right kidney (marked by black arrow).

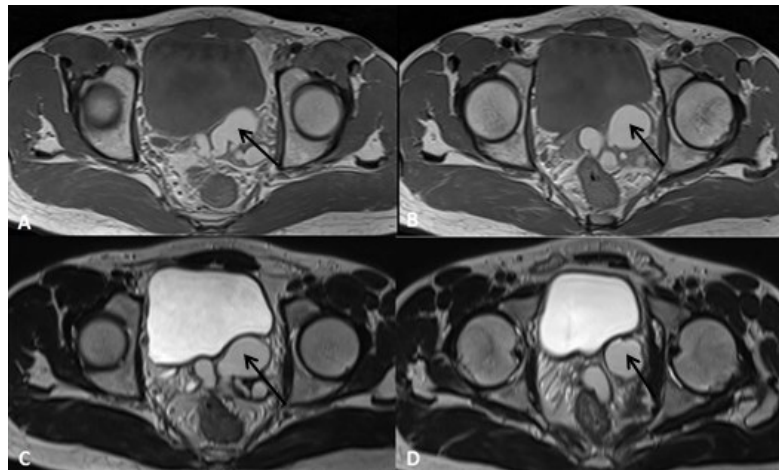


Figure 4: MRI pelvis showing (A-B) multiple cysts in left seminal vesicle appearing hyperintense on T1WI due to high protein content (marked by black arrow) and (C-D) multiple cysts in left seminal vesicle appearing hyperintense on T2WI (marked by black arrow).

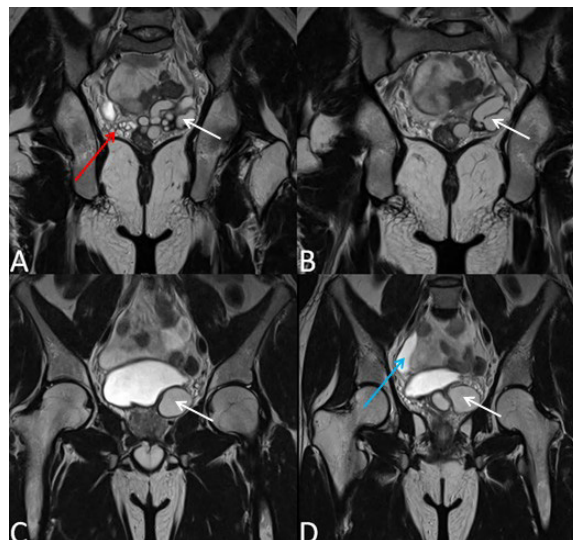


Figure 5: MRI pelvis showing (A-C) normal right seminal vesicle (marked by red arrow), multiple cysts in left seminal vesicle appearing hyperintense on T2WI (marked by white arrow), (D) right megaureter (marked by blue arrow).

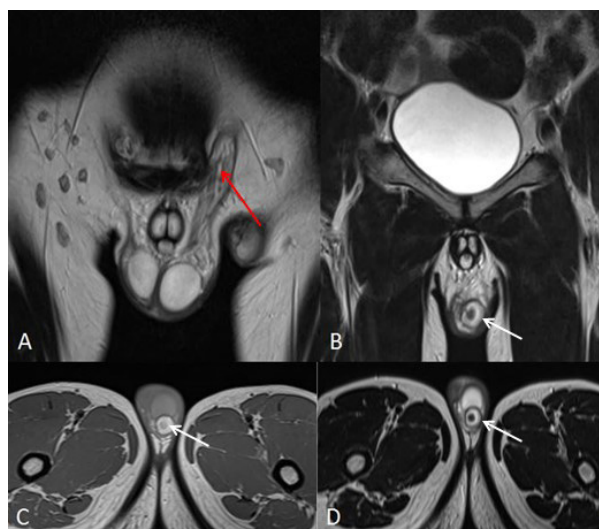


Figure 6: MRI inguino-scrotal region (A) coronal T2WI - dilated left vas deferens in left spermatic cord (marked by red arrow), (B) coronal T2WI - left epididymal cyst (marked by white arrow) appearing hyperintense on T2WI with central calcification, (C) axial T1WI - left epididymal cyst (marked by white arrow) appearing hyperintense on T1WI due to inspissated secretions, (D) axial T2WI - left epididymal cyst (marked by white arrow) appearing hyperintense with central hypointensity due to calcification.

Introduction

Zinner syndrome is a triad of Mullerian duct abnormality characterized by ejaculatory duct obstruction, ipsilateral seminal vesicle cyst and unilateral renal agenesis. It usually presents in the third or fourth decade of life due to infertility. It was first described by Zinner in 1914 [1]. Most patients with Zinner's syndrome are asymptomatic till third or fourth decade of life and manifest during reproductive age group. It is often detected incidentally during cross sectional imaging or during per rectal examination when most of the seminal vesicle cysts are less than 5 cms in size. Giant seminal vesicle cysts are more than 12 cm in size and can cause colonic and bladder obstruction [2]. Malignant transformation in the seminal vesicle cysts is rarely reported [3]. Less than 200 cases have been reported in literature till 2016 [4].

Discussion

During embryogenesis, mesonephric (Wolffian duct) is a paired organ found in humans. Under the influence of testosterone and anti-Mullerian hormones in males, it develops into seminal vesicle, vas deferens, hemitrigone, and bladder neck, urethra proximal to the external sphincter, epididymis, paraepididymis, appendix epididymis and efferent ducts. Insult occurring during the first trimester affects the embryogenesis of seminal vesicle, vas deferens, kidney and ureter. Due to insult, there is maldevelopment of distal part of mesonephric duct leading to atresia of ejaculatory duct and abnormal ureteral budding. Atresia of ejaculatory duct leads to obstruction and cystic dilatation of seminal vesicle due to gradual accumulation of secretions in seminal vesicle with subsequent cyst formation. Abnormal ureteral budding leads to renal agenesis and dysplasia. These pathologies result in azoospermia or oligozoospermia which present as primary infertility [3]. The metanephric blastema during the fourth to sixth week of gestation secretes growth factors. These growth factors induce the growth of the ureteric bud towards it. The ureteric bud also secretes growth factors and proliferates to finally fuse with the metanephric blastema forming the primitive kidney. Disturbance in these inductive events during the fourth to sixth week of embryogenesis (like a mutation of metanephric blastema, disruption of retinoic acid signalling) causes inhibition of ureteric bud growth with resultant failure of fusion of ureteric bud with the metanephric blastema. This results in renal hypoplasia/agenesis. Failure of ureteric bud to separate from the lower part of metanephric duct leads to atresia of ejaculatory duct and obstruction of the seminal vesicle. There is accumulation of secretions in seminal vesicle with resultant cystic dilatation [5].

On sonography, seminal vesicle cyst appears anechoic with variable wall thickness and may show internal echoes due to previous haemorrhage or infection. Ipsilateral renal agenesis is detected by the absence of kidney in renal fossa, along its course of ascent and in an ectopic location. Intra venous urography confirms renal agenesis and can show smooth extrinsic compression along the infero-lateral surface of urinary bladder due to seminal vesicle cyst. On computed tomography (CT), the seminal vesicle cysts are seen as retro-vesicular lesions of water or near water attenuation just superior to the prostate. The cysts may show thick, irregular walls and hyperdense contents due to previous haemorrhage or increased protein content. Magnetic resonance imaging (MRI) can differentiate a seminal vesicle cyst from other pelvic cystic malformations. The presence of fluid of high signal intensity on T2WI and a convoluted tail connecting cyst to seminal vesicle go in favour of the seminal vesicle origin of cystic lesion [3]. Other cystic pelvic lesions are prostatic utricle cyst, true cyst of prostate gland, bladder diverticula, ureterocele, Mullerian duct cysts and hydronephrotic pelvic kidneys. These can be differentiated from seminal vesicle cysts based on their location (median, paramedian and lateral) and imaging characteristics like intra-lesional contents and associated findings in urogenital system. Mullerian duct cysts and ejaculatory duct cysts are midline in location. Aspirate from seminal vesicle cyst show spermatozoa, which differentiate it from Mullerian duct cysts. Bladder diverticulum, ectopic ureterocele and diverticulosis of Ampulla of the vas deferens are laterally located. MRI is useful for accurate pre-operative surgical planning for seminal vesicle cyst excision [3]. Surgical excision is indicated in case of large cyst and presence of clinical symptoms. Zinner syndrome usually presents with dysuria, frequency of micturition, perineal pain, epididymitis, infertility, recurrent UTI, prostatitis and painful ejaculation [2]. Giant seminal vesicle cyst can present with bladder outflow obstruction or colonic obstruction [2].

Transrectal sonography is useful in determining size, location and nature of the seminal vesicle cyst. It demonstrates anechoic contents or debris – suggestive of infection/ previous haemorrhage [3].

Casey, et al. reported a pentad of mesonephric duct abnormality on imaging, which included ipsilateral renal agenesis, seminal vesicle cyst, partial hemi-trigonal development, epididymal dilatation and cystic dysplasia of rete testis [6].

Aspiration of cyst fluid with identification of spermatozoa is diagnostic for Zinner's syndrome, which can be done transperineally [2].

Due to ejaculatory duct atresia, vas deferens can be dilated [7].

There can be dilatation of convoluted structures in the epididymis presenting as a para-testicular mass. These convoluted structures show honeycomb appearance with thickened walls and can show reflux on performing Valsalva maneuver at colour Doppler examination [8]. Unique feature in our case report is dilatation of vas deferens showing reflux during the Valsalva maneuver on colour Doppler examination. The solid lesion seen in epididymal tail is probably due to inspissated secretions due to distal block. Congenital megaureter on the contralateral side in Zinner's syndrome has not been described yet in literature.

Conclusion

Zinner syndrome is rare and a triad of unilateral renal agenesis, ipsilateral seminal vesicle cysts and ipsilateral ejaculatory duct obstruction. MR is an imaging modality of choice for its diagnosis. It usually presents in third to fourth decade of life with infertility.

References

1. Zinner A (1914) An instance of intravesical seminal vesicle. Vienna Med Wochenschr [Ein fall von intravesikaler Samenblasenzyste]. Wien Med Wochenschr 64: 605.
2. Slaoui A, Regragui S, Lasri A, Karmouni T, El Khader K, et al. (2016) Zinner's syndrome: report of two cases and review of the literature. Basic Clin Androl 26:10.
3. Ghonge NP, Aggarwal B, Sahu AK (2010) Zinner syndrome: A unique triad of mesonephric duct abnormalities as an unusual cause of urinary symptoms in late adolescence. Indian J Urol 26: 444-7.
4. Shah S, Patel R, Sinha R, Harris M (2017) Zinner syndrome: an unusual cause of bladder outflow obstruction. BJR Case Rep 2: 20160094.
5. Mehra S, Ranjan R, Garga UC (2016) Zinner syndrome-a rare developmental anomaly of the mesonephric duct diagnosed on magnetic resonance imaging. Radiol Case Rep 11: 313-7.
6. Casey RG, Stunell H, Buckley O, Flynn R, Torreggiani WC (2008) A unique radiological pentad of mesonephric duct abnormalities in a young man presenting with testicular swelling. Br J Radiol 81: e93-6.
7. Murakami K, Kobayashi T, Sumiyoshi S, Okubo K, Kamba T, et al. (2013) Solid testicular mass in a 44-year-old man. Urology 82:1204-6.
8. Pavan N, Bucci S, Mazzon G, Bertolotto M, Trombetta C, et al. (2015) It's not always varicocele: A strange case of Zinner syndrome. Can Urol Assoc J 9: E535-8.