

Ageing Associated Changes in Macromolecule Synthesis in the Endocrine Organs as Revealed by Microscopic Radioautography

Nagata T*

Department of Anatomy and Cell Biology, Shinshu University School of Medicine, Matsumoto, Japan

***Corresponding author:** Nagata T, Department of Anatomy and Cell Biology, Shinshu University School of Medicine, Matsumoto 390-8621, Japan, E-mail: nagatas@cnet.ne.jp

Citation: Nagata T (2015) Ageing Associated Changes in Macromolecule Synthesis in the Endocrine Organs as Revealed by Microscopic Radioautography. SAJ Biotechnol 2: 201. doi: 10.18875/2375-6713.1.401

Article history: Received: 15 November 2014, Accepted: 27 April 2015, Published: 29 April 2015

Abstract

The endocrine system of men and experimental animals consists of several endocrine organs. The term “Cell Ageing” initially means how the cells change due to their ageing. It contains 2 meanings, one how a cell changes when it is isolated from original animals or plants such as *in vitro* cells in cell culture, while the other means how all the cells of an animal or a plant changes *in vivo* due to the ageing of the individual animal or plant. I have been studying the latter changes from the viewpoint of the cell nutrients, the precursors for the macromolecular synthesis such as DNA, RNA, proteins, glucides and lipids, which are incorporated and synthesized into various cells of individual animals. Therefore, this article deals with only the cell ageing of animal cells *in vivo*, how the metabolism, i.e., incorporations and syntheses of respective nutrient precursors in various kinds of cells change due to the ageing of individual experimental animals such as mice and rats by means of microscopic radioautography to localize the RI-labeled precursors. The incorporations and syntheses of various precursors for macromolecules such as DNA, RNA, proteins, glucides, lipids and others in various kinds of cells of various organ in endocrine system are reviewed referring many original papers already published from our laboratory during these 50 years since the late 20C to the early 21C.

Keywords: Endocrine Organs; Microscopic Radioautography; Cell Ageing; DNA Synthesis

Introduction

The endocrine systems of men and experimental animals such as rat and mouse consist of several endocrine organs such as the thyroid, thymus, adrenal, pancreas, testis or ovary. The term “Cell Ageing” initially means how the cells change due to their ageing. It contains 2 meanings, one how a cell changes when it is isolated from *in vivo* original animals or plants such as *in vitro* cells in cell culture, while the other means how all the cells of an animal or a plant change *in vivo* due to the ageing of the individual animal or plant. I had first studied the meaning of cell ageing many years ago (more than 50 years) how a cell changed when it was isolated from original experimental animals such as mice and rats by cell culture [1-3], and then moved to the study on the latter cell ageing, i.e., how all the cells of an experimental animal change *in vivo* due to the ageing of the individual prenatal and postnatal animal [4-8].

Recently, I have been studying the ageing changes from the viewpoint of the cell nutrients those were incorporated and synthesized into various cells in individual animals during their ageing [9]. Therefore, this article deals with only the cell ageing of animal cells *in vivo*, how the metabolism, i.e., incorporations and syntheses of respective nutrients, the macromolecular precursors, in various kinds of cells change due to the ageing of individual experimental animals such as mice and rats by means of microscopic radioautography. The incorporations and syntheses of various nutrients such as DNA, RNA, proteins, glucides, lipids and others in various kinds of cells of endocrine systems such as thyroid, thymus, adrenal gland, pancreatic islet cells or reproductive cells should be reviewed referring many original papers already published from our laboratory.

Radioautography

In order to observe the localizations of the incorporations and syntheses of various nutrients synthesizing macromolecules in the bodies such as DNA, RNA, proteins, glucides and lipids in various kinds of cells of various organ in respective organ systems such as skeletal, muscular, circulatory, digestive, respiratory, urinary, reproductive, endocrine, nervous and sensory systems,

we employed the specific techniques developed in our laboratory during these 60 years [10]. The technique is designated as radioautography using RI-labeled compounds. To demonstrate the localizations of macromolecular synthesis by using such RI-labeled precursors as ^3H -thymidine for DNA, ^3H -uridine for RNA, ^3H -leucine for protein, ^3H -glucosamine or $^{35}\text{SO}_4$ for glucides and ^3H -glycerol for lipids are divided into macroscopic radioautography and microscopic radioautography. The techniques employ both the physical techniques using RI-labeled compounds and the histochemical techniques treating tissue sections by coating sections containing RI-labeled precursors with photographic emulsions and processing for exposure and development. Such techniques can demonstrate both the soluble compounds diffusible in the cells and tissues and the insoluble compounds bound to the macromolecules [11]. As the results, specimens prepared for electron microscopic radioautography (EM RAG) consist of specimen sections, radioautographic emulsions and carbon coating, as the results they are very thick and should be observed with high voltage electron microscopes at 1000-2000kV in order to obtain better transmittance and resolution [12-13]. Such radioautographic techniques in details should be referred to other literature [10]. On the other hand, the systematic results obtained by radioautography should be designated as radioautography, or science of radioautography [14-16]. This article deals with the results dealing with the morphological radioautographic changes those observed in the individual cell in radioautographs by ageing of the individual animals that should be included in radioautography.

Macromolecular Synthesis

The human bodies as well as the bodies of any experimental animals such as mice and rats consist of various macromolecules. They are classified into nucleic acids (both DNA and RNA), proteins, glucides and lipids, according to their chemical structures. These macromolecules can be demonstrated by specific histochemical staining for respective molecules such as Feulgen reaction [17] those stain all DNA contained in the cells. Each compounds of macromolecules such as DNA, RNA, proteins, glucides, lipids can be demonstrated by respective specific histochemical stainings [18] and such reactions can be quantified by microspectrophotometry using specific wave-length demonstrating the total amount of respective compounds [19]. To the contrary, radioautography can only demonstrate the newly synthesized macromolecules such as synthetic DNA or RNA or proteins depending upon the RI-labeled precursors incorporated specifically into these macromolecules such as ^3H -thymidine into DNA or ^3H -uridine into RNA or ^3H -amino acids into proteins [10].

Concerning to the newly synthesized macromolecules, the results of recent studies in our laboratory by the present author and co-workers should be reviewed in this article according to the classification of macromolecules as follows.

The DNA Synthesis

The DNA (deoxyribonucleic acid) contained in cells can be demonstrated either by morphological histochemical techniques staining tissue sections such as Feulgen reaction or by biochemical techniques homogenizing tissues and cells. To the contrary, the synthetic DNA or newly synthesized DNA but not all the DNA can be demonstrated either by morphological or histochemical techniques or by staining of the tissue sections detected as macromolecular synthesis together with other macromolecules such as RNA or proteins in various organs of experimental animals by either morphological or biochemical procedures employing RI-labeled precursors. We have studied the sites of macromolecular synthesis in almost all the organs of mice during their ageing from prenatal to postnatal development to senescence by means of microscopic radioautography, one of the morphological methods [20-28]. The results should be here described according to the order of organ systems in anatomy or histology.

The DNA Synthesis in the Endocrine System

The endocrine system of mammals consists of the hypophysis, pineal body, thyroid, parathyroid, thymus, adrenal, pancreatic islet and genital glands. Among those organs, we studied macromolecular synthesis in the thyroid, adrenal and steroid secreting cells of both sexes, the Leydig cells of the testis and the ovarian follicular cells in mice. On the other hand, incorporations of mercury chloride into human thyroid tissues as well as the intracellular localization of protein kinase C and keratin and vimentin were also studied [10].

The DNA Synthesis in the Thyroid Gland: We first studied incorporations of mercury chloride into human thyroid tissues of both normal and cancer cells obtained from human patients [21-23,29-32]. The tissues were obtained surgically from human patients of both sexes in various ages suffering from the cancer of thyroids and the both normal and cancer cells were cut into small pieces (3x3 mm) aseptically which were incubated in a medium (Eagle's MEM) containing RI-mercury chloride ($^{203}\text{HgCl}_2$) and fixed either cryo-fixation at -196°C and freeze-dried or chemically fixed with buffered glutaraldehyde and osmium tetroxide at 20°C . The former tissue blocks were processed for dry-mounting radioautography, while the latter were processed for conventional wet-mounting radioautography. The results revealed that the silver grains appeared much more in the cancer cells processed for freeze-fixation and dry-mounting radioautography than the cancer cells processed for chemical fixation and wet-mounting radioautography, as well as much more in the cancer cells than the normal cells under the same conditions. On the other hand, PCNA/cyclin and both keratin kinase C and vimentin were immunostained in connection to DNA synthetic activity. It was found that PCNA/cyclin, keratin kinase C and vimentin antibodies were localized around the filaments in the thyroid cancer cells, demonstrating the relation between those antigens and DNA synthetic activity in cell cycle [21,22,33,34].

The DNA Synthesis in the Adrenal Gland: We studied the adrenal tissues of ageing mice, both the adrenal cortex and the medulla, from embryo to postnatal 2 years. Some of the results were already published in several original articles [35-53].

Structure of Ageing Mouse Adreno-Cortical Cells: We studied the adrenal tissues of mice at various ages from embryo to postnatal 2 years [35,36,42-51]. The adrenal tissues obtained from ddY strain mice at various ages from embryo day 19 to postnatal day 30 of both sexes, consisted of the adrenal cortex and the adrenal medulla. The former consisted of 3 layers, zona glomerulosa, zona fasciculata and zona reticularis, developing gradually with ageing as observed by light microscopy (Figure 1 and 2). At embryonic day 19 and postnatal day 1, the 3 layers of the adreno-cortical cells, zona glomerulosa, zona fasciculata and zona reticularis were composed mainly of polygonal cells, while the specific orientation of the 3 layers was not yet well established. At postnatal day 3, orientation of 3 layers, especially the zona glomerulosa became evident. At postnatal day 9 and 14, the specific structure of the 3 layers was completely formed and the arrangements of the cells in respective layers became typical especially at day 14 and month 1 to 24. Observing the ultrastructure of the adreno-cortical cells by electron microscopy, cell organelles including mitochondria were not so well developed at perinatal and early postnatal stages from embryonic day 19 to postnatal day 9. However, these cell organelles, mitochondria, endoplasmic reticulum, Golgi apparatus, appeared well developed similarly to the adult stages at postnatal day 14. The zona glomerulosa is the thinnest layer found at the outer zone, covered by the capsule, consisted of closely packed groups of columnar or pyramidal cells forming arcades of cell columns. The cells contained many spherical mitochondria and well developed smooth surfaced endoplasmic reticulum but a compact Golgi apparatus in day 14 animals. The zona fasciculata was the thickest layer, consisted of polygonal cells that were larger than the glomerulosa cells, arranged in long cords disposed radially to the medulla containing many lipid droplets. The mitochondria were less numerous and were more variable in size and shape than those of the glomerulosa cells, while the smooth surfaced endoplasmic reticulum were more developed and the Golgi apparatus was larger than the glomerulosa. In the zona reticularis, the parallel arrangement of cell cords were anastomosed showing networks continued to the medullar cells. The mitochondria were less numerous and were more variable in size and shape than those of the glomerulosa cells like the fasciculata cells, as well as the smooth surfaced endoplasmic reticulum were developed and the Golgi apparatus was large like the fasciculata cells. However, the structure of the adrenal cortex tissues showed changes due to development and ageing at respective developmental stages

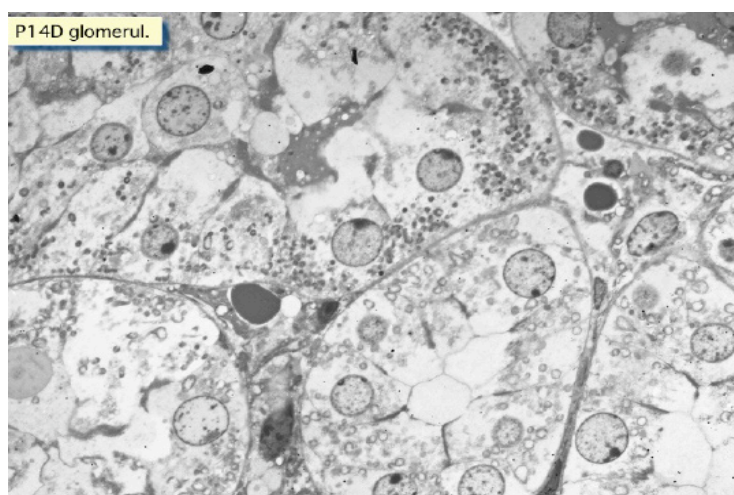


Figure 1: LM and EM RAG of the endocrine organs

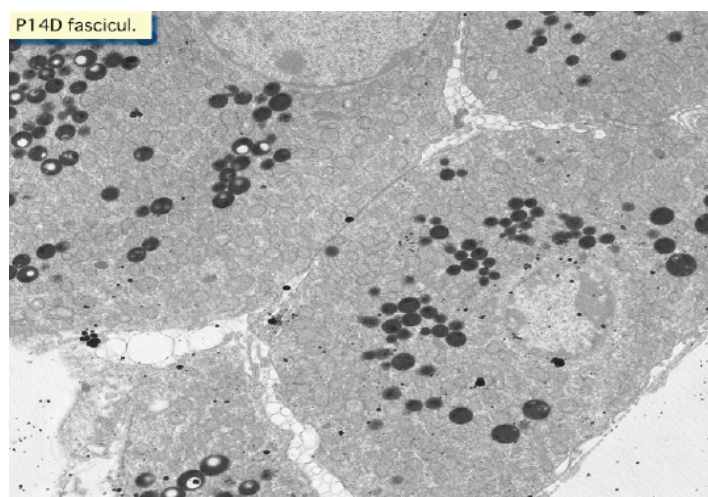


Figure 2: LM RAG of a young mouse adrenal cortex, labeled with ^3H -thymidine, showing DNA syntheses in 3 layers, zona glomerulosa (left), zona fasciculata (middle), zona reticularis (right)

The DNA Synthesis in the Adreno-Cortical Cells: Both LM and EM RAG were employed for demonstrating DNA synthesis using labeled ^3H -thymidine. The silver grains were found over the nuclei of some adreno-cortical cells in S-phase of cell cycle mainly in perinatal stages at embryonic day 19, postnatal day 1 and day 3, while less at day 9 and day 14 to month 1-24 [35,36,42-46]. The labeled cells were found in all the 3 layers the zona glomerulosa the zona fasciculata and the zona reticularis, at respective ageing stages. In labeled adreno-cortical cells in the 3 layers the silver grains were mainly localized over the euchromatin of the nuclei and only a few or several silver grains were found over the mitochondria of these cells as observed by EM RAG (Figure 1). To the contrary, most adreno-cortical cells were not labeled with any silver grains in their nuclei nor cytoplasm, showing no DNA synthesis after labeling with ^3H -thymidine. Among many unlabeled adreno-cortical cells, however, most cells in the 3 layers were observed to be labeled with several silver grains over their mitochondria due to the incorporations of ^3H -thymidine especially at the perinatal stages from embryonic day 19 to postnatal day 1, day 3, day 9 and 14 (Figure 1). The ultrastructural localizations of silver grains over the mitochondria were mainly on the mitochondrial matrices and some over the cristae or membranes.

Number of Mitochondria of Ageing Mouse Adreno-Cortical Cells: Preliminary quantitative analysis on the number of mitochondria in 10 adreno-cortical cells whose nuclei were labeled with silver grains and other 10 cells whose nuclei were not labeled in each aging group revealed that there was no significant difference between the number of mitochondria and the labeling indices ($P < 0.01$). Thus, the number of mitochondria and the labeling indices were later calculated regardless whether their nuclei were labeled or not [35,36,42-46]. The results obtained from the number of mitochondria in adreno-cortical cells in the 3 layers of respective animals in 10 ageing groups at perinatal stages, prenatal embryo day 19, postnatal day 1, 3, 9 and 14, showed gradual increase from the prenatal day 19 (glomerulosa 12.5, fasciculata 14.9, reticularis 15.2/cell) to postnatal day 14 and month 1 and 2 (glomerulosa 62.2, fasciculata 64.0, reticularis 68.2/cell). The increase from embryo day 19 to postnatal month 2 was stochastically significant ($P < 0.01$). Then, they did not change significantly to month 12 and 24 (Figure 2).

Mitochondrial DNA Synthesis of Ageing Mouse Adreno-Cortical Cells: The results of visual grain counts on the number of mitochondria labeled with silver grains obtained from 10 adreno-cortical cells in the 3 layers of each animal labeled with ^3H -thymidine demonstrating DNA synthesis in 10 ageing groups at perinatal stages, prenatal embryo day 19, postnatal day 1, 3, 9 and 14, and month 1, 2, 6, 12 and 24 were reported previously [35,36,42-46]. The results demonstrated that the numbers of labeled mitochondria with ^3H -thymidine showing DNA synthesis gradually increased from prenatal embryo day 19 (glomerulosa 0.3, fasciculata 0.5, reticularis 0.4/cell) to postnatal day 14, month 1 and 2 (glomerulosa 5.3, fasciculata 5.0, reticularis 6.2/cell), reaching the maximum, then decreased to month 6, 12 and 24 (Figure 2). The increase and decrease were stochastically significant ($P < 0.01$).

The Labeling Index of DNA Synthesis in Mouse Adreno-Cortical Mitochondria: On the other hand, the labeling indices in respective aging stages were calculated from the number of labeled mitochondria, dividing by the number of total mitochondria per cell which were mentioned previously [35,36,42,43-46,51,54]. The results showed that the labeling indices gradually increased from prenatal day 19 (glomerulosa 2.4, fasciculata 2.7, reticularis 2.6%) to postnatal day 14, month 1 and 2 (glomerulosa 8.5, fasciculata 7.8, reticularis 8.8%), reaching the maximum and decreased to month 6 (glomerulosa 4.1, fasciculata 4.2, reticularis 3.8%), 12 and 24 (Figure 2). The increase and decrease were stochastically significant ($P < 0.01$) (Figure 3).

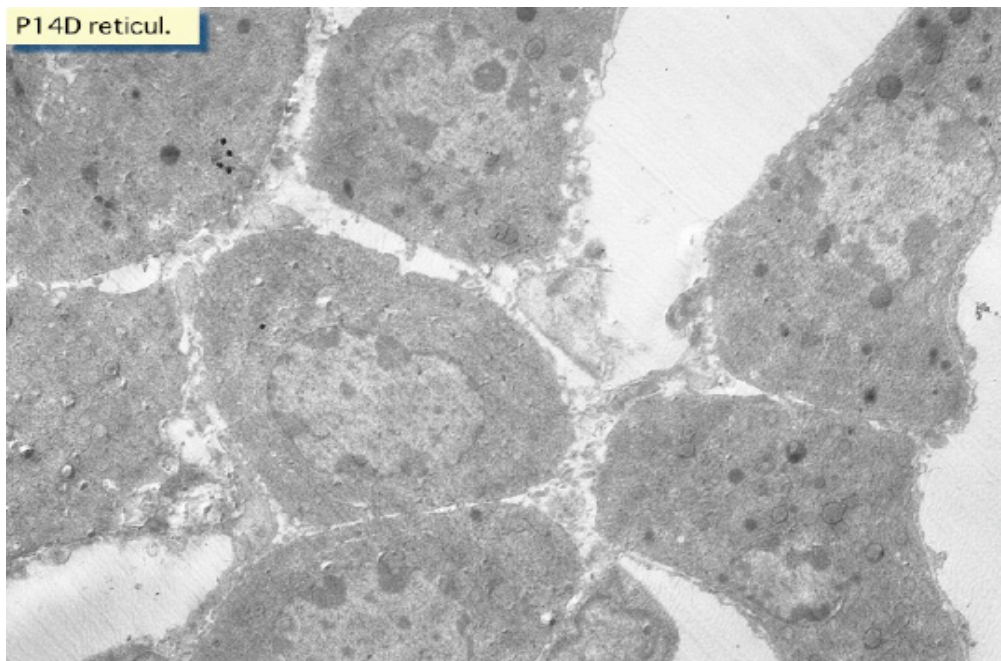


Figure 3: Histogram showing aging changes of average labeling indices in respective cell types of the adrenal glands of aging mice labeled with ^3H -thymidine showing DNA synthesis. Mean \pm Standard Deviation

Structure of Ageing Mouse Adreno-Medullary Cells: We studied the adrenal tissues of mice at various ages from embryo to postnatal 2 years. The adrenal tissues obtained from ddY strain mice at various ages from embryo day 19 to postnatal day 30 of both sexes, consisted of the adrenal cortex and the adrenal medulla [35,36,42-46,48,54-57]. The former consisted of 3 layers, zona glomerulosa, zona fasciculata and zona reticularis, developing gradually with aging as observed by light microscopy (Figure 1), while the latter consisted of 2 cell types in one layer when observed by electron microscopy [44-46,54-57]. At embryonic day 19 and postnatal day 1, the 3 layers of the adreno-cortical cells, zona glomerulosa, zona fasciculata and zona reticularis were composed mainly of polygonal cells, while the specific orientation of the 3 layers was not yet well established. However, the orientation of 3 layers became evident at day 3 and completely formed at day 14 and to month 1-24 (Figure 1). On the other hand, the medulla consisted of only one layer containing 2 types of cells, adrenalin cell and noradrenalin cell. The former contains adrenalin granules with low electron density, while the latter contains noradrenalin granules with high electron density.

The DNA Synthesis in the Adreno-Medullary Cells: The adrenal medulla is the deepest layer in the adrenal glands, surrounded by the 3 layers of the adrenal cortex as observed by light and electron microscopy [35,36,42-46,55-57], containing either adrenalin granules or noradrenalin granules. Quantitative analysis revealed that the numbers of mitochondria in both adrenalin and noradrenalin cells at various ages increased from fetal day 19 to postnatal month 1 due to ageing of animals, respectively, but did not decrease to month 24, while the number of labeled mitochondria and the labeling indices of intramitochondrial DNA synthesis changed due to ageing. When they were labeled with ^3H -thymidine silver grains appeared over some nuclei of both cell types at perinatal stages, but they appeared almost all the cell bodies containing mitochondria. Quantitative analysis revealed that the numbers of mitochondria in both adrenalin and noradrenalin cells at various ages increased from fetal day 19 to postnatal month 1 due to ageing of animals, respectively, while the number of labeled mitochondria and the labeling indices of intramitochondrial DNA synthesis incorporating ^3H -thymidine increased from fetal day 19 to postnatal day 14 (2 weeks), reaching the maxima, and decreased to month 24. It was shown that the activity of intramitochondrial DNA synthesis in the adrenal medullary cells in ageing mice increased and decreased due to ageing of animals (Figure 3).

The DNA Synthesis in the Islet of Langerhans: When we studied macromolecular synthesis in the exocrine pancreatic cells of ageing mice by LM and EMRAG we also studied the islet cells of Langerhans together with the exocrine cells, using RI labeled precursors such as ^3H -thymidine for DNA [58-60], ^3H -uridine for RNA [58-61], ^3H -leucine for proteins [62,63], ^3H -glucosamine for glucides [64], ^3H -glycerol for lipids [65,66]. The results showed that the islet cells, A, B and C cells, incorporated those precursors to synthesize DNA, RNA, proteins and glucides. The labeling index of DNA synthesis and the densities of silver grains showing RNA, proteins and glucides syntheses were high at prenatal and earlier postnatal stages from day 1 to day 14, then decreased from 1 month to 1 year due to ageing. However, the labeling index by ^3H -thymidine and the grain counts by ^3H -uridine and ^3H -leucine in the endocrine cells was less than those in the exocrine cells at the same ages.

The DNA Synthesis in the Leydig Cells of the Testis: The cells of Leydig can be found in the interstitial tissues between the seminiferous tubules of the testis of mammals [34,53,67-69]. They are identified as spherical, oval, or irregular in shape and their cytoplasm contain lipid droplets. We studied the macromolecular synthesis of the cells in the testis of several groups of litter ddY mice at various ages from fetal day 19 to postnatal ageing stages up to 2 years senescence by LM and EMRAG using ^3H -thymidine, ^3H -uridine and ^3H -leucine incorporations.

The Leydig cells from embryonic stage to senescent stages were labeled with ^3H -thymidine as observed by LMRAG (Figure 1). The changes of the numbers of labeled Leydig cells with the ^3H -thymidine incorporation into the nuclei showing the DNA synthesis were found in these cells at different ageing stages. Only a few cells were labeled after ^3H -thymidine at embryonic day 19. At early postnatal stages, there was a slight increase of the number of labeled cells. The numbers of labeled cells from perinatal stage to postnatal 14 days and 1, 2, 6 months were similar to the values found at prenatal and early postnatal stages. The notable increases in the number of labeled cells of Leydig were found from 9 months to 2 years in senescence. The labeling indices with ^3H -thymidine in perinatal stages to postnatal 6 months were low (5-10%) but increased at 9 months and maintained high level (50-60%) to 2 years [34,53,67,68]. The labeling indices at senescent stages still maintained a relatively high level and they were obviously higher than those of young animals. By electron microscopy, typical Leydig cells contained abundant cell organelles such as smooth surfaced endoplasmic reticulum, Golgi apparatus and mitochondria with tubular cristae. The silver grains were mainly localized over the euchromatin of labeled nucleus. Some of the grains were also localized over some of the mitochondria in both the nuclei labeled and unlabeled cells.

The DNA Synthesis in the Ovarian Follicles: The ovarian follicles in the ovaries of mature mice are one of the steroid secreting organs in female animals. We studied the DNA and RNA synthesis of the follicular cells in the developing ddY mice ovaries in several ageing groups at postnatal day 1, 3, 7, 14, 30 and 60 by LM and EMRAG using ^3H -thymidine and ^3H -uridine [70,71]. From the results it was shown that both DNA and RNA synthesis in the ovarian follicular cells were observed. Quantitative analysis, as expressed with labeling indices and grain counts, revealed that both increased significantly from postnatal day 1 to 3, then decreased from day 7 to 60 (Figure 4). Comparing the results to other female genital cells, a paralleled alteration of both DNA and RNA synthesis was revealed between the ovarian follicular cells and other uterine or oviductal cells (Figure 4). On the other hand, the glycoconjugate synthesis as shown by the uptake of $^{35}\text{S}\text{O}_4$ in mouse ovary during the estrus cycle was also demonstrated [72] (Figure 4).

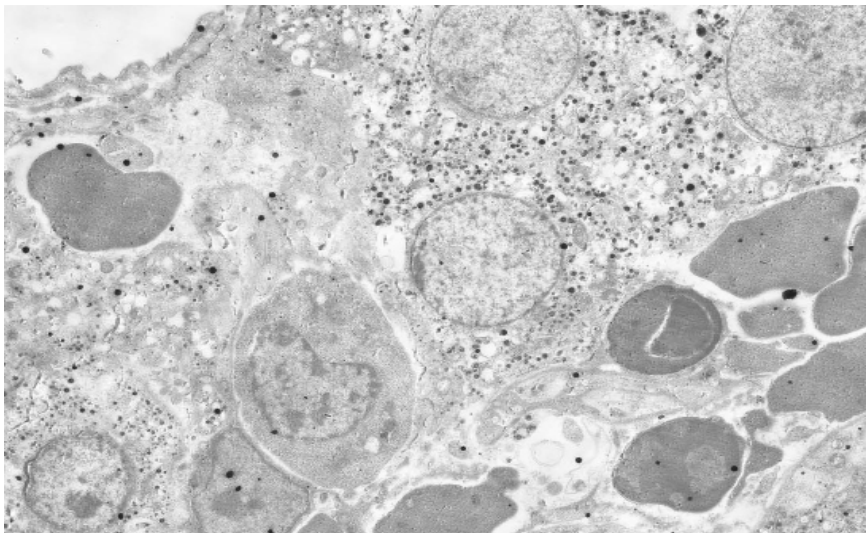


Figure 4: Histogram showing aging changes of average labeling indices in respective cell types of female genital organs of aging mice labeled with ^3H -thymidine. Mean \pm Standard Deviation

The RNA Synthesis

The RNA (ribonucleic acid) contained in cells can be demonstrated either by morphological histochemical techniques staining tissue sections such as methyl green-pyronin staining or by biochemical techniques homogenizing tissues and cells. To the contrary, the synthetic RNA or newly synthesized RNA but not all the RNA in the cells can be detected as macromolecular synthesis together with other macromolecules such as DNA or proteins in various organs of experimental animals by either morphological or biochemical procedures employing RI-labeled precursors. We have studied the sites of macromolecular synthesis in almost all the organs of mice during their aging from prenatal to postnatal development to senescence by means of microscopic radioautography, one of the morphological methods [20,21,24-26,28]. The results obtained from RNA synthesis should be here described according to the order of organ systems in anatomy or histology. In contrast to the results obtained from DNA synthesis of almost all the organs, we have studied only several parts of the organ systems. The skeletal system, the muscular system or the circulatory system were not so much studied.

The RNA Synthesis in the Pancreas

On the other hand, LM and EMRAG of pancreas of mouse injected with ^3H -uridine demonstrated its incorporation into exocrine and then in endocrine cells, and more in pancreatic acinar cells than in ductal or centro-acinar cells [59,61]. Among the acinar cells, the number of silver grains increased after birth to day 14 and then decreased with ageing. Quantification of silver grains in the nucleoli, chromatin, and cell body were carried out by X-ray microanalysis [58,73-75] which verified the results obtained by visual grain counting. In EMRAG obtained from the pancreas of fetal day 19 embryos, newborn day 1 and newborn day 14 mice labeled with ^3H -uridine, demonstrating RNA synthesis, the numbers of silver grains in the nucleoli, nuclear chromatin and cytoplasm increased [58,59,73-77]. In order to quantify the silver contents of grains observed over the nucleoli, nuclei and cytoplasm, X-ray spectra were recorded by energy dispersive X-ray microanalysis (JEM-4000EX TN5400), demonstrating Ag-K peaks at higher energies. Thus, P/B ratios expressing relative silver contents were determined and compared between the two age groups. The results obtained by X-ray microanalysis in different cell compartments at postnatal day 1 and day 14 and the results obtained by visual grain counting in different cell compartments in day 1 day and day 14 animals were compared. The number of silver grains was calculated to express the counts per unit area to be compared with the XMA counts. These two results, the silver content analyzed by X-ray microanalysis and the results obtaining from visual grain counting were in good accordance with each other.

The RNA Synthesis in the Testis

We studied the RNA syntheses in ageing mouse testis by LM and EM RAG, demonstrating the incorporations of ^3H -uridine into various cells of the seminiferous tubules [10,34,67]. The RNA synthesis of various cells in the seminiferous tubules was studied using ^3H -uridine, while the protein synthesis was by ^3H -leucine incorporations. Silver grains due to ^3H -uridine demonstrating RNA synthesis were observed over the nuclei and cytoplasm of all spermatogonia, spermatocytes, Sertoli's cells, myoid cells of immature mice at perinatal stages at day 1 and 3, as well as in mature and senescent mice from month 1, 6 to year 1 and 2. The synthetic activities of spermatogonia, Sertoli's cells and myoid cells as shown by grain counting with ^3H -uridine, as expressed by grain counting, were low (2-8 grain counts per $10\ \mu\text{m}^2$ at the embryonic and neonatal stages but increased at adult stages and maintained high levels (10-20 grain counts per $10\ \mu\text{m}^2$) until senescence. These results showed that DNA synthesis in myoid cells and Sertoli's cells increase at the perinatal stages and decrease from postnatal 2 weeks as described previously, while the RNA synthesis in spermatogonia increase from postnatal 2 weeks together with DNA and protein syntheses to senescence.

The RNA Synthesis in the Implantation

In order to detect the changes of RNA synthesis of the developing blastocysts in mouse endometrium during activation of the implantation, ovulations of female BALB/C strain mice were controlled by pregnant mare serum gonadotropin and human chorionic gonadotropin, then pregnant female mice were ovariectomized on the 4th day of pregnancy [78-82]. The delay implantation state was maintained for 48 hrs and after 0 to 18 hrs of estrogen supply, ^3H -uridine was injected. The three regions of the endometrium, i. e. the interimplantation site, the antimesometrial and mesometrial sides of implantation site, were taken out and processed for LM and EMRAG. It was well known that the uterus of the rodent becomes receptive to blastocyst implantation only for a restricted period. This is called the implantation window that is intercalated between refractory states of the endometrium whose cycling is regulated by ovarian hormones [82]. We studied the changes of RNA synthesis by ^3H -uridine [81] incorporations in the endometrial cells of pregnant-ovariectomized mice after time-lapse effect of nidatory estradiol. As the results, the endometrial cells showed topographical and chronological differences in the nucleic acid synthesis. The cells labeled with ^3H -uridine demonstrating RNA synthesis were observed in both epithelial cells and stromal cells. Quantitative analysis revealed that the labeling indices with ^3H -thymidine in the stromal cells at antimesometrial and mesometrial side of implantation sites and interimplantation sites increased from 0 hr to 3 (10% in antimesometrial site), 6, 12 and 18 hr, reaching a peak (60% in antimesometrial site) at 18 hrs after estrogen induction, while the number of silver grains as expressed by grain counting per μm^2 in both the stromal and epithelial cells on the antimesometrial side due to ^3H -uridine increased from 0 hr to 3 and 6 hr, reaching a peak (4 grain count per μm^2 in luminal epithelial cells) at 6 hr and decreased from 12 to 18 hr (2 grain count per μm^2 in luminal epithelial cells). These

results suggested that the presence of the blastocysts in the uterine lumen induced selective changes in the behavior of endometrial cells after nidatory estradiol effect showing the changes of DNA and RNA synthesis. The time coincident peak of RNA synthesis detected in the endometrial cells at the anti-mesometrial side of the implantation site, probably reflected the activation moment of the implantation window.

The RNA Synthesis in the Endocrine System

We studied the RNA synthesis of the adrenal glands and the cells of Leydig in the testis of aging mice among the endocrine organs after the administration of ^3H -uridine at various ages.

The RNA Synthesis in the Adrenal Glands: The RNA synthesis in the adrenal glands was studied in both the adrenal cortex and the adrenal medulla after administration of ^3H -uridine in aging mice at various ages from perinatal stages to senescence at year 2.

The RNA Synthesis in Aging Mouse Adreno-Cortical Cells: Observing both LM and EM RAG labeled with ^3H -uridine, demonstrating RNA synthesis, the silver grains were found over the nuclei and cytoplasm of almost all the adreno-cortical cells from perinatal stages to postnatal month 1-24 [37,38,52,53]. Those labeled cells were found in all the 3 layers, the zona glomerulosa (Figure 1), the zona fasciculata and the zona reticularis, at respective aging stages. In labeled adreno-cortical cells in the 3 layers the silver grains were mainly localized over the euchromatin of the nuclei and several silver grains were found over the endoplasmic reticulum, ribosomes and mitochondria of these cells. The ultrastructural localizations of silver grains over the mitochondria were mainly on the mitochondrial matrices and some over the cristae or membranes.

Mitochondrial RNA Synthesis of Ageing Mouse Adreno-Cortical Cells: The results of visual grain counts on the number of mitochondria labeled with silver grains obtained from 10 adreno-cortical cells in the 3 layers of each animal labeled with ^3H -uridine demonstrating RNA synthesis in 10 aging groups at perinatal stages, prenatal embryo day 19, postnatal day 1, 3, 9 and 14, and month 1, 2, 6, 12 and 24 were reported previously [37,38,52,53]. The results demonstrated that the numbers of labeled mitochondria with ^3H -uridine showing RNA synthesis gradually increased from prenatal embryo day 19 (glomerulosa 0.3, fasciculata 0.5, reticularis 0.4/cell) to postnatal day 14, month 1 and 2 (glomerulosa 5.3, fasciculata 5.0, reticularis 6.2/cell), reaching the maximum, then decreased to month 6, 12 and 24. The increase and decrease were stochastically significant ($P < 0.01$).

The Labeling Index of RNA Synthesis in Mouse Adreno-Cortical Mitochondria: On the other hand, the labeling indices in respective aging stages were calculated from the number of labeled mitochondria, dividing by the number of total mitochondria per cell that were mentioned previously [37,38,52,53]. The results showed that the labeling indices gradually increased from prenatal day 19 (glomerulosa 10.4, fasciculata 12.1, reticularis 13.1%) to postnatal day 1 (glomerulosa 12.6, fasciculata 11.4, reticularis 11.1%), 3, 9 (glomerulosa 16.6, fasciculata 18.0, reticularis 18.0%), reaching the maximum and decreased to day 14, month 1 (glomerulosa 11.4, fasciculata 11.0, reticularis 10.7%) 2 (glomerulosa 8.5, fasciculata 7.8, reticularis 8.8%), month 6 (glomerulosa 4.1, fasciculata 4.2, reticularis 3.8%), 12 and 24. The increase and decrease were stochastically significant ($P < 0.01$).

RNA Synthesis in Ageing Mouse Adreno-Medullary Cells: The adrenal medulla consists of 2 cell types, the adrenalin cells and noradrenalin cells. When they were labeled with ^3H -uridine, an RNA precursor, silver grains appeared over almost all the cells, both nuclei and cytoplasm containing mitochondria [38,53,83]. Quantitative analysis revealed that the numbers of mitochondria in both adrenalin and noradrenalin cells at various ages increased from fetal day 19 to postnatal month 1 due to ageing of animals, respectively, but did not decrease to month 24, while the number of labeled mitochondria and the labeling indices of intramitochondrial RNA synthesis incorporating ^3H -uridine increased from fetal day 19 to postnatal month 1, reaching the maxima, but did not decrease to month 24. It was shown that the activity of intramitochondrial RNA synthesis in the adrenal medullary cells in aging mice increased but did not decrease due to ageing of animals in contrast to DNA synthesis [83].

The Leydig Cells of the Testis: The cells of Leydig can be found in the interstitial tissues between the seminiferous tubules of the testis of mammals [34,53,67,68]. They are identified as spherical, oval, or irregular in shape and their cytoplasm contains lipid droplets. We studied the macromolecular synthesis of the cells in the testis of several groups of litter ddY mice at various ages from fetal day 19 to postnatal aging stages up to 2 years senescence by LM and EMRAG using ^3H -thymidine, ^3H -uridine and ^3H -leucine incorporations.

The incorporation of ^3H -uridine into RNA was observed in almost all the Leydig cells in the interstitial tissues of the testis from embryonic day 19 to 2 years after birth. A few silver grains over the nuclei and cytoplasm of the Leydig cells labeled with ^3H -uridine were observed at embryonic day 19. The silver grains over those cells slightly decreased at postnatal day 1, 3, 7 and 14. The number of the silver grains over the nuclei increased from postnatal 1 month onwards. The average number of silver grains over the cytoplasm increased gradually and reached the maximum at 12 months after birth. At each stage, the activity of RNA synthesis was specifically localized over the euchromatin in the nucleus and nucleolus as observed by EMRAG. From adult to senescent stages, the activity of RNA synthesis maintained a high level in their nuclei as compared to the cytoplasm. In the cytoplasm of Leydig cells in respective aging groups some of the mitochondria and endoplasmic reticulum were also labeled with silver grains. It is noteworthy that the average grain counts increased prominently in the senescent aging groups at 1 and 2 years after birth.

The Protein Synthesis

The proteins found in animal cells are composed of various amino-acids which initially form low molecular polypeptides and finally macromolecular compounds designated as proteins. They are chemically classified into two, simple proteins and conjugated proteins. Therefore, the proteins can be demonstrated by showing specific reactions to respective amino-acids composing any proteins. Thus, the proteins contained in cells can be demonstrated either by morphological histochemical techniques staining tissue sections such as Millon reaction or tetrazonium reaction or otherwise by biochemical techniques homogenizing tissues and cells. To the contrary, the newly synthesized proteins but not all the proteins in the cells can be detected as macromolecular synthesis together with other macromolecules such as DNA or RNA in various organs of experimental animals by either morphological or biochemical procedures employing RI-labeled precursors. We have studied the sites of macromolecular synthesis in almost all the organs of mice during their aging from prenatal to postnatal development to senescence by means of microscopic radioautography [10,20-25,28]. The results obtained from protein synthesis should be described according to the order of organ systems in anatomy or histology. In contrast to the results obtained from DNA synthesis of almost all the organs, we have studied only several parts of the organ systems.

The Protein Synthesis in the Pancreas

As for the protein synthesis in the pancreas, ^3H -leucine incorporation into endoplasmic reticulum, Golgi apparatus and to secretory granules of pancreatic acinar cells was first demonstrated by Jamieson and Palade (1967). We first studied ^3H -glycine incorporation into these cell organelles of mouse pancreatic acinar cells in connection with soluble compounds by EM RAG [84,85]. It was demonstrated that soluble ^3H -glycine distributed not only in these cell organelles but also in the karyoplasm and cytoplasm diffusely. Then, the quantitative aspects of protein synthesis with regards the ageing from fetal day 19, to postnatal day 1, 3, 7, 14 and 1, 2, 5 and 12 months were also clarified [62,85]. The results showed an increase of silver grain counts labeled with ^3H -leucine after birth, reaching a peak from postnatal 2 weeks to 1 month, and decreasing from 2 months to 1 year.

On the other hand, we also studied ^3H -leucine incorporations into the pancreatic acinar cells of both normal adult rats and experimentally pancreatitis induced rats with either ethionine or alcohol [86,87]. The results showed that the incorporations as indicated silver grain counts in the pancreatitis rats were less than normal control rats. However, its relation to the ageing was not yet studied.

The Protein Synthesis in the Leydig Cells of the Testis

We studied the macromolecular synthesis of the cells in the testis of several groups of litter ddY mice at various ages from fetal day 19 to postnatal aging stages up to 2 years senescence by LM and EM RAG using ^3H -thymidine, ^3H -uridine and ^3H -leucine incorporations [34,41,67,58]. The incorporation of ^3H -leucine into proteins was observed in almost all the Leydig cells in the interstitial tissues of the testis. The silver grains were located over the nuclei and cytoplasm of respective Leydig cells. The ageing change of protein synthesis of Leydig cells among different ageing groups was also found [10,88]. At embryonic day 19, the silver grains of Leydig cells labeled with ^3H -leucine was observed in both nucleus and cytoplasm and there was no obvious difference between the number of silver grains on the cytoplasm and the nucleus. The number of silver grains decreased at postnatal day 1 and then increased at day 3 and 7. However, the number of silver grains on both the nucleus and cytoplasm decreased from 1 month to 3 months and increased again from 6 months onwards maintaining a high level from adult to senescent stages. Some of the silver grains were also localized over some of the mitochondria in respective ageing groups as observed by EM RAG. These results indicate that the DNA, RNA and protein syntheses in Leydig cells are maintained at rather high level even at senescent stages at postnatal 1 and 2 years when the animals survived for longer lives.

The Glucide Synthesis

The glucides found in animal cells and tissues are composed of various low molecular sugars such as glucose or fructose called monosaccharides those form compounds of polysaccharides or complex mucopolysaccharides connecting to sulfated compounds. The former are called simple polysaccharides, while the latter mucopolysubstances. Thus, the glucides are chemically classified into 3 groups, monosaccharides such as glucose or fructose, disaccharides such as sucrose and polysaccharides such as mucosubstances. However, in most animal cells polysaccharides are much more found than monosaccharides or disaccharides. The polysaccharides can be classified into 2, i.e. simple polysaccharides and mucosubstances. Anyway, they are composed of various low molecular sugars that can be demonstrated by either histochemical reactions or biochemical techniques. To the contrary, the newly synthesized glucides but not all the glucides in the cells and tissues can be detected as macromolecular synthesis together with other macromolecules such as DNA, RNA or proteins in various organs of experimental animals by either morphological or biochemical procedures employing RI-labeled precursors. We have studied the sites of macromolecular synthesis in almost all the organs of mice during their aging from prenatal to postnatal development to senescence by means of microscopic radioautography [10,20-22,24,28,31]. The results obtained from glucides synthesis are described according to the order of organ systems in anatomy or histology. In contrast to the results obtained from DNA synthesis of almost all the organs, we have studied only several parts of the organ systems. The skeletal system, the muscular system and the circulatory system were not yet studied.

The Lipid Synthesis

The lipids found in animal cells are chemically composed of various low molecular fatty acids. They are esters of high fatty acids and glycerol that can biochemically be classified into simple lipids and compound lipids such as phospholipids, glycolipids or proteolipids. The simple lipids are composed of only fatty acids and glycerol, while the latter composed of lipids and other components such as phosphates, glucides or proteins. In order to demonstrate intracellular localization of total lipids, we can employ either histochemical reactions or biochemical techniques. To the contrary, the newly synthesized lipids but not all of the lipids in the cells can be detected as macromolecular synthesis similarly to the other macromolecules such as DNA, RNA, proteins or glucides in various organs of experimental animals by either morphological or biochemical procedures employing RI-labeled precursors. We have studied the sites of macromolecular synthesis in almost all the organs of mice during their aging from prenatal to postnatal development to senescence by means of microscopic radioautography [10,20,22-24,28,31,32]. However, we have not studied the lipids synthesis so much as compared to other compounds. We have studied only a few organs of the digestive system.

The Intracellular Localization of the Other Substances

The other substances than macromolecules that can also be demonstrated by radioautography are target tracers not the precursors for the macromolecular synthesis. They are hormones such as ^3H -methyl prednisolone [89], neurotransmitters and inhibitors such as ^{14}C -bupranolol, a beta-blocking agent [90] or ^3H -befunolol [91,92], vitamins, drugs such as synthetic anti-allergic agent ^3H -tranilast [60,93-96], hypolipidemic agent bezafibrate [97-99], calmodulin antagonist [100,101] or anti-hypertensive agent ^3H -benidipine hydrochloride [102], toxins, inorganic substances such as mercury [29,30] and others such as laser beam irradiation [103]. The details are referred to the previous publication on the radioautography [10]. However, their relationships to the cell ageing were not studied.

Conclusion

From the results obtained, it was concluded that almost all the cells in various organs of all the organ systems of experimental animals at various ages from prenatal to postnatal development and senescence during the ageing of cells and individual animals demonstrated to incorporate various macromolecular precursors such as ^3H -thymidine, ^3H -uridine, ^3H -leucine, ^3H -glucose or glucosamine, ^3H -glycerol and others localizing in the nuclei, cytoplasmic cell organelles showing silver grains due to DNA, RNA, proteins, glucides, lipids and others those which the cells synthesized during the cell ageing. Quantitative analysis carried out on the numbers of silver grains in respective cell organelles demonstrated quantitative changes, increases and decreases, of these macromolecular synthesis in connection to cell ageing of respective organs. In general, DNA synthesis with ^3H -thymidine incorporations in most organs showed maxima at perinatal stages and gradually decreased due to ageing. To the contrary, the other synthesis such as RNA, proteins, glucides and lipids increased due to ageing and did not remarkably decrease until senescence. Anyway, these results indicated that macromolecular synthetic activities of respective compounds in various cells were affected from the ageing of the individual animals.

Thus, the results obtained from the various cells of various organs should form a part of special radioautography that I had formerly proposed [10,15], i.e., application of radioautography to the ageing of cells, as well as a part of special cytochemistry as was formerly reviewed. We expect that such special radioautography and special cytochemistry should be further developed in all the organs in the future.

Acknowledgement

This study was supported in part by Grant-in-Aids for Scientific Research from the Ministry of Education, Science and Culture

of Japan (No. 02454564) while the author worked at Shinshu University School of Medicine as well as Grants for Promotion of Characteristic Research and Education from the Japan Foundation for Promotion of Private Schools (No. 1997, 1998 1999, 2000) while the author worked at Nagano Women's Jr. College. The author is also grateful to Grant-in-Aids for Scientific Research from the Japan Society for Promotion of Sciences (No. 18924034, 19924204, 20929003) while the author has been working at Shinshu Institute of Alternative Medicine and Welfare since 2005 up to the present time. The author thanks Dr. Kiyokazu Kametani, Technical Official, Department of Instrumental Analysis, Research Center for Human and Environmental Sciences, Shinshu University, for his technical assistance in electron microscopy during the course of this study.

References

1. Nagata T (1956) On the relationship between cell division and cytochrome oxidase in the Yoshida sarcoma cells. *Shinshu Med J* 5: 383-6.
2. Nagata T (1957) Studies on the amitosis in the Yoshida sarcoma cells. I. Observation on the smear preparation under normal conditions. *Med J Shinshu Univ* 2: 187-98.
3. Nagata T (1957) Studies on the amitosis in the Yoshida sarcoma cells. II. Phase-contrast microscopic observations under normal conditions. *Med J Shinshu Univ* 2: 199-207.
4. Nagata T (1959) Cell divisions in the liver of the fetal and newborn dogs. *Med J Shinshu Univ* 4: 65-73.
5. Nagata T (1962) A radioautographic study of the DNA synthesis in rat liver, with special reference to binucleate cells. *Med J Shinshu Univ* 7: 17-25.
6. Nagata T, Momozé S (1959) Aging changes of the amitotic and binucleate cells in dog livers. *Acta Anat Nipponica* 34: 187-90.
7. Nagata T, Shimamura K, Onozawa M, Kondo T, Ohkubo K, et al. (1960) Relationship of binuclearity to cell function in some organs. I. Frequencies of binucleate cells in some organs of toads in summer and winter. *Med J Shinshu Univ* 5: 147-52.
8. Nagata T, Shimamura K, Kondo T, Onozawa M, Momozé S, et al. (1960) Relationship of binuclearity to cell function in some organs. II. Variation of frequencies of binucleate cells in some organs of dogs owing to aging. *Med J Shinshu Univ* 5: 153-8.
9. Nagata T (2010) Macromolecular synthesis in the livers of aging mice as revealed by electron microscopic radioautography. In *Prog Histochem Cytochem* 45: 1-80.
10. Nagata T (2002) Radioautography General and Special. In *Prog Histochem Cytochem* 37: 59-226.
11. Nagata T (1967) Electron microscopic dry-mounting autoradiography. *Proc 4th Internat Cong Histochem Cytochem Kyoto* 43-4.
12. Nagata T (2001) Three-dimensional high voltage electron microscopy of thick biological specimens. *Micron* 32: 387-404.
13. Nagata T (2001) Three-dimensional and four-dimensional observation of histochemical and cytochemical specimens by high voltage electron microscopy. *Acta Histochem Cytochem* 34: 153-69.
14. Nagata T (1998) Radioautography, the advocacy of a new concept. *Braz J Biol Med Res* 31: 977-1018.
15. Nagata T (1999) Radioautography, general and special: a novel concept. *Ital J Anat Embryol* 104: 487.
16. Nagata T (2000) Introductory remarks: Special radioautography. *Cell Mol Biol* 46: 161.
17. Feulgen R, Rossenbeck H (1924) Microscopic - chemical detection of Nucleinsaeure of the thymus Thymonucleinsaeure Z. *Physic. Chem.* 135: 203-48.
18. Pearse AGE, Stoward PJ (1991) *Histochemistry, Theoretical and Applied*. (4th Edn) Vol 3, Churchill Livingstone Publishers, London.
19. Nagata T (1972) Application of microspectrophotometry to various substances. *Introduction to Microspectrophotometry*. eds 49-155.
20. Nagata T (1992) Radiolabeling of soluble and insoluble compounds as demonstrated by light and electron microscopy. *Recent Advances in Cellular and Molecular Biology*, Wegmann RJ, Wegmann M A, eds Peters Press, Leuven 6: 9-21.
21. Nagata T (1994) Application of electron microscopic radioautography to clinical electron microscopy. *Med Electron Microsc* 27: 191-212.
22. Nagata T (1994) *Radioautography in Medicine*. Shinshu University Press, 268pp, Matsumoto.
23. Nagata T (1994) Radioautography, general and special In *Histo- and Cyto-chemistry 1994*, Japan Society of Histochemistry and Cytochemistry 1: 219-231.
24. Nagata T (1996) Technique and application of electron microscopic radioautography. *J Electron Microsc* 45: 258-74.
25. Nagata T (1996) Techniques of light and electron microscopic radioautography. *Histochemistry and Cytochemistry 1996. Proc Xth Internat Congr Histochem Cytochem Acta Histochem Cytochem* 29: 343-4.
26. Nagata T (1996) Remarks: Radioautography, general and special. *Cell Mol Biol* 11-2.
27. Nagata T (1996) On the terminology of radioautography vs. autoradiography. *J Histochem Cytochem* 44: 1209.
28. Nagata T (1997) Techniques and applications of microscopic radioautography. *Histol Histopathol* 12: 1091-124.
29. Murata F, Momose Y, Yoshida K, Ohno S, Nagata T (1977) Nucleic acid and mucosubstance metabolism of mastocytoma cells by means of electron microscopic radioautography. *Acta Pharmacol. Toxicol.* 41: 58-9.
30. Nagata T, Yoshida K, Murata F (1977) Demonstration of hot and cold mercury in the human thyroid tissues by means of radioautography and chemography. *Acta Pharmacol Toxicol* 41: 60-1.
31. Nagata T (1994) Electron microscopic radioautography with cryo-fixation and dry-mounting procedure. *Acta Histochem Cytochem* 27: 471-89.
32. Nagata T (1994) Application of electron microscopic radioautography to clinical electron microscopy. *Med Electron Microsc* 27: 191-212.
33. Shimizu T, Usuda N, Yamada T, Sugeno A, Iida F (1993) Proliferative activity of human thyroid tumors evaluated by proliferating cell nuclear antigen/cyclin immunohistochemical studies. *Cancer* 71: 2807-12.
34. Gao F, Ma H, Sun L, Jin C, Nagata T (1994) Electron microscopic radioautographic study on the nucleic acids and protein synthesis in the aging mouse testis. *Med Electron Microsc* 27: 360-2.
35. Ito M (1996) The radioautographic studies on aging change of DNA synthesis and the ultrastructural development of mouse adrenal gland. *Cell Mol Biol* 42: 279-92.

36. Ito M, Nagata T (1996) Electron microscopic radioautographic studies on DNA synthesis and ultrastructure of the adrenal gland in aging mouse. *Med. Electron Microsc* 29: 145-52.
37. Liang Y (1998) Light microscopic radioautographic study on RNA synthesis in the adrenal glands of aging mice. *Acta Histochem Cytochem* 31: 203-10.
38. Liang Y, Ito M, Nagata T (1999) Light and electron microscopic radioautographic studies on RNA synthesis in aging mouse adrenal gland. *Acta Anat Nippon* 74: 291-300.
39. Nagata T (1999) Aging changes of macromolecular synthesis in various organ systems as observed by microscopic radioautography after incorporation of radiolabeled precursors. *Methods Find Exp Clin Pharmacol* 21: 683-706.
40. Nagata T (2000) Three-dimensional observations on thick biological specimens by high voltage electron microscopy. *Image Analysis Stereolog* 19: 51-6.
41. Nagata T (2000) Biological microanalysis of radiolabeled and unlabeled compounds by radioautography and X-ray microanalysis. *Scanning Microscopy International* 14.
42. Nagata T (2008) Electron microscopic radioautographic study on mitochondrial DNA synthesis in adrenal cortical cells of developing mice. *J Cell Tis Res* 8: 1303-12.
43. Nagata T (2008) Electron microscopic radioautographic study on mitochondrial DNA synthesis in adrenal cortical cells of developing and aging mice. *The Sci World J* 8: 683-97.
44. Nagata T (2009) Electron microscopic radioautographic studies on macromolecular synthesis in mitochondria of various cells. 18EMSM Conference Proc 9th Asia-Pacific Microscopy Conference Malaysia, 48-50.
45. Nagata T (2009) Recent studies on macromolecular synthesis labeled with ³H-thymidine in various organs as revealed by electron microscopic radioautography. *Current Radiopharmaceutics* 2: 118-28.
46. Nagata T (2009) Electron microscopic radioautographic study on mitochondrial DNA synthesis in adrenal medullary cells of developing and aging mice. *J Cell Tissue Res* 9:1793-802.
47. Nagata T (2009) Applications of high voltage electron microscopy to thick biological specimens. *Ann Microsc* 9: 4-40.
48. Nagata T (2009) Electron microscopic radioautographic study on DNA synthesis of mitochondria in adrenal medullary cells of aging mice. *Open Anat J* 1: 13-23.
49. Nagata T (2009) Electron microscopic radioautographic studies on macromolecular synthesis in mitochondria of animal cells in aging. *Ann Rev Biomed Sci* 11: 1-17.
50. Nagata T (2009) Electron microscopic radioautographic studies on macromolecular synthesis in mitochondria of some organs in aging animals. *Bull Shinshu Inst Alternat Med Welfare* 4: 15-38.
51. Nagata T (2009) Electron microscopic radioautographic study on mitochondrial DNA synthesis in adreno-cortical cells of aging ddY mice. *Bull Shinshu Inst Alternat Med Welfare* 4: 51-66.
52. Nagata T (2010) Electron microscopic radioautographic study on mitochondrial RNA synthesis in adrenocortical cells of aging mice. *Open Anat J* 2: 91-7.
53. Nagata T, Ito M, Liang Y, Gao F (2000) Study of the effects of aging on macromolecular synthesis in mouse steroid secreting cells using microscopic radioautography. *Methods Find Exp Clin Pharmacol* 22: 5-18.
54. Nagata T (2010) Electron microscopic radioautographic study on mitochondrial RNA synthesis in adrenal cortical and medullary cells of aging mice. *J Biomed Sci Enginer* 4: 1-14.
55. Nagata T (2010) Electron microscopic radioautographic study on protein synthesis of mitochondria in adrenal medullary cells of aging mice. *Bulletin Shinshu Inst Alternat Med Welfare*.
56. Nagata T (2010) Electron microscopic radioautographic study on protein synthesis of mitochondria in adrenal cortical cells of aging mice. *Bulletin Shinshu Inst Alternat Med Welfare* 5: 58-72.
57. Nagata T (2010) Electron microscopic radioautographic study on mitochondrial DNA, RNA and protein synthesis in adrenal cells of aging mice. *Formatex Microscopy Series* 1: 170-81.
58. Nagata T, Usuda N (1985) Image processing of electron microscopic radioautograms in clinical electron microscopy. *J Clin Electron Microsc* 18: 451-2.
59. Nagata T, Usuda N (1986) Studies on the nucleic acid synthesis in pancreatic acinar cells of aging mice by means of electron microscopic radioautography. *J Clin Electron Microsc* 19: 486-7.
60. Nagata T, Nishigaki T, Momose Y (1986) Localization of anti-allergic agent in rat mast cells demonstrated by light and electron microscopic radioautography. *Acta Histochem. Cytochem.* 19: 669-83.
61. Nagata T, Usuda N (1993) In situ hybridization by electron microscopy using radioactive probes. *J Histochem Cytochem* 41: 1119.
62. Nagata T, Usuda N (1993) Electron microscopic radioautography of protein synthesis in pancreatic acinar cells of aging mice. *Acta Histochem Cytochem* 26: 481.
63. Usuda N, Nagata T (1995) The immunohistochemical and in situ hybridization studies on hepatic peroxisomes. *Acta Histochem Cytochem* 28: 169-72.
64. Nagata T, Usuda N, Suzawa H, Kanzawa M (1992) Incorporation of ³H-glucosamine into the pancreatic cells of aging mice as demonstrated by electron microscopic radioautography. *J Clin Electron Microsc* 25: 646-7.
65. Nagata T, Usuda N, Maruyama M, Ma H (1988) Electron microscopic radioautographic study on lipid synthesis in perinatal mouse pancreas. *J Clin Electr Microsc* 21: 756-7.
66. Nagata T, Usuda N, Ma H (1990) Electron microscopic radioautography of lipid synthesis in pancreatic cells of aging mice. *J Clin Electr Microsc* 23: 841-2.
67. Gao F (1993) Study on the macromolecular synthesis in aging mouse seminiferous tubules by light and electron microscopic radioautography. *Cell Mol Biol* 39: 659-72.
68. Gao F, Chen S, Sun L, Kang W, Wang Z, et al. (1995) Radioautographic study of the macromolecular synthesis of Leydig cells in aging mice testis. *Cell Mol Biol* 41: 145-50.
69. Gao F, Jin C, Ma H, Sun L, Nagata T (1995) Ultrastructural and radioautographic studies on DNA synthesis in Leydig cells of aging mouse testis. *Cell Mol Biol* 41: 151-60.

70. Li S (1994) Relationship between cellular DNA synthesis, PCNA expression and sex steroid hormone receptor status in the developing mouse ovary, uterus and oviduct. *Histochemistry* 102: 405-13.
71. Li S, Nagata T (1995) Nucleic acid synthesis in the developing mouse ovary, uterus and oviduct studied by light and electron microscopic radioautography. *Cell Mol Biol* 41: 185-95.
72. Li S, Gao F, Duan H, Nagata T (1992) Radioautographic study on the uptake of $^{35}\text{SO}_4$ in mouse ovary during the estrus cycle. *J Clin Electron Microsc* 25: 709-10.
73. Nagata T (1991) Electron microscopic radioautography and analytical electron microscopy. *J Clin Electron Microsc* 24: 441-2.
74. Nagata T (1993) Quantitative analysis of histochemical reactions: Image analysis of light and electron microscopic radioautograms. *Acta Histochem. Cytochem.* 26: 281-91.
75. Nagata T (1993) Quantitative light and electron microscopic radioautographic studies on macromolecular synthesis in several organs of prenatal and postnatal aging mice. *Chinese J Histochem Cytochem* 2: 106-8.
76. Nagata T (2004) X-ray microanalysis of biological specimens by high voltage electron microscopy. In *Prog Histochem. Cytochem* 39: 185-319.
77. Nagata T (1985) Principles and techniques of radioautography. *Histo- and Cyto-chemistry 1985 Japan Society of Histochemistry and Cytochemistry* 207-26.
78. Yamada AT (1993) Timely and topologically defined protein synthesis in the periimplanting mouse endometrium revealed by light and electron microscopic radioautography. *Cell Mol Biol* 39: 1-12.
79. Yamada AT, Nagata T (1992) Ribonucleic acid and protein synthesis in the uterus of pregnant mouse during activation of implantation window. *Med Electron Microsc* 27: 363-5.
80. Yamada AT, Nagata T (1992) Light and electron microscopic radioautography of DNA synthesis in the endometria of pregnant-ovariectomized mice during activation of implantation window. *Cell Mol Biol* 38: 763-74.
81. Nagata T (2007) Macromolecular synthesis in hepatocyte mitochondria of aging mice as revealed by electron microscopic radioautography. I: Nucleic acid synthesis. *Modern Research and Educational Topics in Microscopy. J eds Formatex Microscopy Series* 1: 245-58.
82. Yamada A, Nagata T (1993) Light and electron microscopic radioautography of RNA synthesis of peri-implanting pregnant mouse during activation of receptivity for blastocyst implantation. *Cell Mol Biol* 38: 211-33.
83. Yoshinaga K (1988) Uterine receptivity for blastocyst implantation. *Ann N Y Acad Sci* 541: 424-31.
84. Nagata T (2010) Electron microscopic radioautographic study on mitochondrial RNA synthesis in adrenal medullary cells of aging and senescent mice. *J Cell Tissue Res* 10: 2213-22.
85. Nagata T (2000) Electron microscopic radioautographic study on protein synthesis in pancreatic cells of perinatal and aging mice. *Bull Nagano Women's Jr. College* 8: 1-22.
86. Yoshizawa S, Nagata A, Honma T, Oda M, Murata F, et al. (1974) Study of ethionine pancreatitis by means of electron microscopic radioautography. *J. Clin Electron Microsc* 7: 349-50.
87. Yoshizawa S, Nagata A, Honma T, Oda M, Murata F, et al. (1977) Radioautographic study of protein synthesis in pancreatic exocrine cells of alcoholic rats. *J Clin Electron Microsc* 10: 372-3.
88. Nagata T (2001) Special cytochemistry in cell biology. In, *Internat. Rev Cytol* 211: 33-154.
89. Nagata T, Yoshida K, Ohno S, Murata F (1978) Ultrastructural localization of soluble and insoluble ^3H -methyl prednisolone as revealed by electron microscopic dry-mounting radioautography. *Proc 9th Internat Congr Electr Microsc* 2: 40-1.
90. Tsukahara S, Yoshida K, Nagata T (1980) A radioautographic study on the incorporation of ^{14}C -bupranolol (beta-blocking agent) into the rabbit eye. *Histochemistry* 68: 237-44.
91. Nagata T, Yamabayashi S (1983) Intracellular localization of ^3H -befunolol by means of electron microscopic radioautography of cryo-fixed ultrathin sections. *J Clin Electron Microsc* 16: 737-8.
92. Yamabayashi S, Gunarso W, Tsukahara S, Nagata T (1981) Incorporation of ^3H -befunolol (beta blocking agent) into melanin granules of ocular tissues in the pigmented rabbits. I. Light microscopic radioautography. *Histochemistry* 73: 371-5.
93. Nishigaki T, Momose Y, Nagata T (1987) Light microscopic radioautographic study of the localization of anti-allergic agent, Tranilast, in rat mast cells. *Histochem J* 19: 533-6.
94. Nishigaki T, Momose Y, Nagata T (1990) Electron microscopic radioautographic study of the localization of an anti-allergic agent, tranilast, in rat mast cells. *Cell Mol Biol* 36: 65-71.
95. Nishigaki T, Momose Y, Nagata T (1990) Localization of the anti-allergic agent tranilast in the urinary bladder of rat as demonstrated by light microscopic radioautography. *Drug Res* 40: 272-5.
96. Momose Y, Naito J, Nagata, T (1989) Radioautographic study on the localization of an anti-allergic agent, tranilast, in the rat liver. *Cell Mol Biol* 35: 347-55.
97. Momose Y, Nagata T (1993) Radioautographic study on the intracellular localization of a hypolipidemic agent, bezafibrate, a peroxisome proliferator, in cultured rat hepatocytes. *Cell Mol Biol* 39: 773-81.
98. Momose Y, Shibata N, Kiyosawa I, Naito J, Watanabe T, et al. (1993) Morphometric evaluation of species differences in the effects of bezafibrate, a hypolipidemic agent, on hepatic peroxisomes and mitochondria. *J Toxicol Pathol* 6: 33-45.
99. Momose Y, Naito J, Suzawa H, Kanzawa M, Nagata T (1995) Radioautographic study on the intracellular localization of bezafibrate in cultured rat hepatocytes. *Acta Histochem Cytochem* 28: 61-6.
100. Ohno S, Fujii Y, Usuda N, Nagata T, Endo T, et al. (1982) Intracellular localization of calmodulin antagonists (W-7). Calmodulin and intracellular Ca^{2+} receptors 39-48.
101. Ohno S, Fujii Y, Usuda N, Endo T, Hidaka H, et al. (1983) Demonstration of intracellular localization of calmodulin antagonist by wet-mounting radioautography. *J Electron Microsc* 32: 1-12.
102. Suzuki K, Imada T, Gao F, Ma H, Nagata T (1994) Radioautographic study of benidipine hydrochloride: localization in the mesenteric artery of spontaneously hypertensive rat. *Drug Res* 44: 129-133.

103. Nagata T (1984) Electron microscopic observation of target cells previously observed by phase-contrast microscopy: Electron microscopic radioautography of laser beam irradiated cultured cells. *J Clin Electron Microsc* 17 589-90.